

This document is replacing the homework policy
which is currently being updated

ALVA ACADEMY HOME LEARNING GUIDE FOR STUDENTS & PARENTS



BQE (S1-S3)

S1-S3 Art



Types of homework set:

Pupils will put into practice the skills they are developing in class, for example, drawing and investigative skills. They will also be expected to revise these concepts and the vocabulary they are learning.

Please note that after Christmas all S3 pupils will be given our National 4 programme of homework as they will begin National 4 course work in class.

How Often:

Home learning will be set as appropriate to the tasks set within class. It may not always be at regular times.

How Parents can help:

Many tasks are accompanied with a step by step guide to assist pupils and parents.

Help that is available in school

S1-S3 Maths

(Levels 2, 3 & 4)

Types of homework set

Formal homework is set on specific topics and marked by the class teacher. Oral or written feedback with next steps given and time given in class for pupils to act on feedback. Informal homework may be given after some lessons as appropriate. These tasks will be self-assessed or peer assessed as appropriate

How often

Formal homework every two weeks which will have one week notice.
Finishing off work started in class as and when required.

How parents can help

Numeracy booklet will be uploaded to the maths subject page with help tips

Mathletics website has help tips

S1-S3 Modern Languages

Types of homework set

Reading, writing, translating and research tasks will be set by the class teacher on specific topics.

How often

Learning vocabulary is vital for learning a language and should be done daily.

How parents can help

Revision will be set in advance of class assessments so parents could practice vocabulary with pupils.

S1-S3 Social Subjects

Types of homework set

Both formal and informal homework can be provided in a variety of forms, including:

- Past paper questions
- Textbook
- Projects/Investigations
- Extended response practise
- Revision
- Internet research
- Edmodo

How often

Homework should be issued on a fortnightly basis where results should be recorded by the class teacher in their record of marks. Some departments issue weekly homework for S4/S5/S6 classes.

It is reasonable to request the following:

S1/2: Approximately 30 - 45 minutes homework per fortnight.

S3: Approximately 1-1½ hour per subject per fortnight

S4/S5/6: Approximately 2-2½ hours per subject per week/fortnight

How parents can help

- ✓ Take an interest in what your child is studying.
- ✓ Question them about their learning - prior to assessments
- ✓ Encourage them to read beyond what is set by the department.
- ✓ Encourage them to use the library and internet to further their knowledge.
- ✓ Sign up to Edmodo

S1-S3 Science

Types of homework set

Homework tasks may include the following:

- Written tasks from question sheets/booklets.
- Revising the last lesson in preparation for the next.
- Researching a particular topic.
- Preparing a presentation.
- Revision for assessment.

In addition students are expected to use their summary sheets and their jotters to read about the work they are doing.

How often

- Regular homework will be set. This will depend upon the course material at the time. Teachers aim to return homework within one week.

Homework should occupy about 30 minutes per week for S1 and 45 minutes per week for S2.

How parents can help

- Ensure that summary sheets/textbooks are used.
- Check that all homework has been neatly done.
- Look at the marks gained in homework and tests and praise good or improved performance.
- Help students to learn by asking questions using summaries, Key Words, etc

The help that is available in school

- All members of staff encourage students to complete homework early and to seek help from the teacher if having difficulties.
- Supported study is available for all subjects. Pupils should check with their class teacher for times

S1-S3 Technical

Types of homework set

Homework will be given out when the prerequisite learning has taken place. This will differ from class to class due to S1 and S2 pupils working on a rota basis in Technical.

How often

Pupils will complete at least one homework per rota.

How parents can help

Students are encouraged to seek ideas, experience and encouragement from their parents/ other family members. It is expected all homework is their own.

The help that is available in school

Homework will be given with enough time for pupils to ask in class or at lunchtimes for extra help/clarification prior to work being submitted.

S1-2 ICT



Types of homework set:

- Written tasks from question sheets
- Learning tasks e.g. Keywords
- Researching a particular topic
- Preparing a presentation

How often:

- Regular homework will be set.

How parents can help:

- Encourage your child to hand the homework in on time.

Help that is available in school:

- Help is available after school and at lunchtimes by arrangement with the class teacher.

S3 Business Management



Types of homework set:

- Written questions
- Case study questions
- Past paper questions
- Researching/using social media to follow business people
- Keeping up-to-date with business news
- Reading
- Revising for internal assessments
- Revising for exams

How often:

- Every one/two weeks

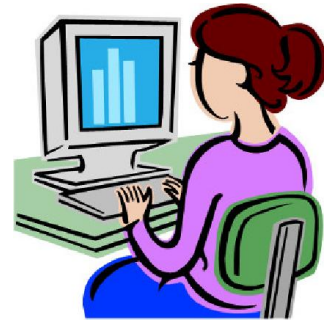
How parents can help:

- Encourage them to hand the homework in on time.
- Ask them for definitions of various business terms from the course notes.

The help that is available in school:

- Help is available weekly at supported study.

S3 Administration



Types of homework set:

- Learning key words
- Written questions
- Researching
- Practising using the software
- Reading over notes
- Revising for assessments
- Revising for exam

How often:

- Due to the practical nature of the course homework will be issued once a month, with the frequency increasing nearer assessments and the final exam.

How parents can help:

- Encourage them to hand the homework in on time.
- Help them to revise for assessments and the final exam by reading course notes.

The help that is available in school:

- Help is available weekly at supported study.

S1-S3 Music



Types of homework set:

Pupils will be expected to practice their chosen instruments where possible, revise musical concepts introduced in class and complete music literacy exercises.

How often:

- Set as appropriate to tasks taught in class therefore it will not be on a regular set basis

How parents can help:

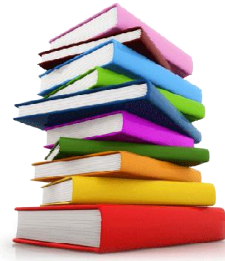
- Encourage them to hand the homework in on time.
- <http://www.educationscotland.gov.uk/nqmusic/>

The help that is available in school:

Help is available after school and at lunchtimes by arrangement with the class teachers.

Practice rooms are available to pupils at interval / lunch and after school

S1-S3 English



Types of homework set:

All pupils are encouraged to read literature as part of their homework. S1-3 are given Homework Booklets for each term and they may also have tasks set for homework that link to their texts studied in class.

How often:

- Pupils must complete the homework tasks set as laid out by the individual class teacher. This could be on a daily, weekly, or bi-weekly basis. The Homework booklets may be set to complete in one term or have shorter deadlines for regular checks. Pupils should also **ALWAYS** read for at least 20mins a night.

How parents can help:

- Encourage pupils to hand the homework in on time.
- Encourage pupils to read both fiction and non-fiction ie. newspapers

The help that is available in school:

S1-S3 Homework Club every week.

Physical Education

Types of homework set and how often

No formal homework is given though students may be asked to undertake extra practice at home to assist in improving their performance.

We also encourage all students to seek ways of achieving one hour of exercise per day.

How parents can help

You can encourage your son/daughter by helping them practice or complete one hour of physical activity per day.

National 4,5 & Higher PE

Types of homework

Homework normally consists of finishing off work that was started in class or specific questions that relate to their topic of work.

Students may have to do some prior reading to revise certain topics before the next lesson, or assessment.

How often

Homework normally will be once per fortnight but certain topics require more frequent homework.

How parents can help

You can help your son/daughter by taking an interest in the topics and encouraging them to use their booklets for help.

What help is available in school

Practical improvement opportunities are made available at lunchtime by appointment.

Supported study given on certain days after school by appointment.

Home Economics/Hospitality

Types of homework set

No specific homework given. Recipes are on the school website for pupils to practise at home.

How parents can help

Ensure payment is made promptly to ensure completion of the full practical experience.

Encourage their child to cook more at home and practise skills like washing up, weighing and measuring etc.

Practise of the exam recipes before assessments is helpful. Recipes can be found on the school website.

The help that is available in school

The department will support pupils who are having difficulty. Ask a teacher when help is required.

Fashion

Types of homework set

No specific homework given

How parents can help

Parents can help by ensuring fabric is purchased in a timely fashion for each unit to prevent delays in the manufacture of the items.

The amount payable to the school is on the course outline letter that is given out at the start of the year.

Nat 5/Higher Health & Food Technology

Types of homework set

Homework normally will be once per fortnight but certain topics require more frequent homework.

How parents can help

You can help your son/daughter by taking an interest in the topics and encouraging them to use their booklets for help, encourage pupils to complete homework on time and ensure deadlines for unit assessments are met.

The help that is available in school

Supported study given on certain days after school by appointment.